



**ACHEMT**  
American College of Healthcare Executives  
of Middle Tennessee

An Independent Chapter of



American College of  
Healthcare Executives  
*for leaders who care®*

## MIDDLE TENNESSEE CHAPTER NEWSLETTER



### LOOKING FOR LIONS

I love nuggets of wisdom leaders share along the way. Here is one I picked up several years ago during my time at Vanderbilt.

While our teams are heads down and working in the weeds, we are the ones that need to stand up and look across the plains for lions that may come our way. As a leader, it is easy to get focused on the here and now, executing day-to-day operations, so I appreciate reminders to carve out time to pause, think ahead about what's coming up, where we should be spending

our time and consider potential issues and opportunities that may on the horizon.

I hope this is a brief but encouraging reflection to help you do a leadership look-ahead.

Here's another thought - When I was at Congress last month, I attended a session on executive leadership. One thought-provoking statement that made a big impression on me was, "Many leaders here are not the CEO of your company, but you *are* the CEO of your area, so go be the CEO". This is an excellent reminder of how much influence we all have to make a difference for patients, staff and colleagues every day. I hope you have a great weekend!



## A CHANCE TO GET INVOLVED

ACHEMT offers many ways to get involved and committee participation is one of them. We have five active committees, including Communications, Membership & Events, Sponsorship, Career Advancement and Programs. For more information, contact [Volunteer@ACHE.org](mailto:Volunteer@ACHE.org). Currently, both the Career Advancement and Communications Committee are looking for volunteers. For more information about both of these committees and their volunteer needs, reach out to [Marca.Barr@Parallon.com](mailto:Marca.Barr@Parallon.com) and [LAnderson@qhcus.com](mailto:LAnderson@qhcus.com)



## NAVIGATING CAREER PLANNING & TRANSITIONS

**SPRING NETWORKING EVENT, MAY 9**

# FEATURED SPEAKER



**Elisabeth Constantin, Owner  
ABREO Executive Services**

Elisabeth Constantin offers strategic insights into how high-profile leaders who break into the C-Suite strategically approach their major career transitions.

Based on 20 years of combined experience in Executive Compensation, Global HR, Negotiation, Recruiting and Headhunting, session participants gain unparalleled insights into the executive search world and how world-class leaders prepare themselves to achieve consistently higher statuses in titles and compensation — tomorrow, and years down the line.

## LEARNING OBJECTIVES

1. How high profile leaders break into the C-Suite
2. How leaders approach a career transition
3. Major considerations when changing positions

# PROGRAM AGENDA

- 3:30 to 4:00 p.m. Registration Check-In
- 4:00 to 5:00 p.m. Workshop at LifePoint Health
- 5:00 to 6:00 p.m. Networking at Corner Pub

## EVENT COST

- ACHEMT members \$15
- ACHE members. \$20
- ACHE student members \$10
- Non-ACHE Members/Guests \$25

## QUALIFIED EDUCATION

By attending the offered, participants may earn up to 1 ACHE Qualifying Education Hours toward initial certification or recertification of the Fellow of the American College of Healthcare Executives (FACHE) designation. Participants in this program who wish to have it considered for ACHE Qualifying Education hours should list their attendance when they apply to the American College of Healthcare Executives for advancement or recertification. Participants are responsible for maintaining a record of their ACHE Qualifying Education hours. (This can be completed by logging into ACHE.org, clicking the drop-down next to your name, clicking “My ACHE”, Clicking “My Education Credit” and then updating the “Self Reported Credits (Qualified Education)” section.)

## EVENT REFUND POLICY

*Five calendar days advance notice required in writing to [treasurer@achemt.org](mailto:treasurer@achemt.org). Refund shall be processed as a credit to be reused for future events for amounts greater than \$25. Any amount less than \$25 will be forfeited if canceled at any time.*

# LEADERSHIP DEVELOPMENT PROGRAM PREMIERS IN JUNE



New to our educational offerings this year is a five-month educational series, Leadership Development Program (LDP), designed for those early to mid-careerists looking to enhance healthcare industry knowledge and leadership skills. Our Career Advancement Committee members have secured a strong line-up of noted professors and industry leaders as LDP instructors, who will present engaging, relevant and current content to a selected group of cohorts. Interested individuals can apply at <https://achemt.org/ldp>.

Executive leaders, this is a great opportunity to engage mid-level managers in high-value, low-cost ongoing professional development.

- The 2024 LDP cohort will meet June - November, once per month from 6 to 8 p.m.
- Upon completion, participants will receive 12 ACHE Qualifying Education credits.
- Cost - \$250

- Applicants will be notified in May of selection with final registration instructions,

## TOPICS INCLUDE

- Health and Healthcare Environment
- Business Principles
- Leadership
- Communication and Relationship Management
- Professional and Social Responsibility
- Summary and Group Presentations

For more information and to register, visit <https://achemt.org/ldp>

## SAVE THE DATE



## JUNE 13, ANNUAL CONFERENCE

Session I: 1:00-2:30 p.m. and Session II: 3:00-4:30 p.m.

Trevecca Nazarene University Health Sciences Bld. Room 209

333 Murfreesboro Rd.

Nashville, TN 37210

Specific details continue to be finalized for our Annual Conference! Find information here, at [achemt.org](http://achemt.org) and on LinkedIn as more information becomes available. The event will consist of two ACHE In-Person Education credit sessions.

# FEATURED TOPICS

- Disruptive healthcare and the competitors of traditional healthcare
- The impact of consumerism, "pay-viders" and AI



## CAREER EDGE A VALUE-ADD TO YOUR ACHE MEMBERSHIP

In the rapidly changing healthcare field, a career plan is more important than ever. ACHE is pleased to bring you a unique, interactive and comprehensive tool for planning and managing your career called CareerEDGE®. It's available as a complimentary benefit to all ACHE members.

To access the CareerEDGE tool, go to [www.ache.org/CareerEDGE](http://www.ache.org/CareerEDGE).

## FEATURES

- A personalized online "Career Dashboard," featuring career planning tools, job site links and other career resources.
- Access to several free assessments, including a 360° Working Style tool and a modified version of ACHE's popular Healthcare Leadership Competencies Assessment Tool.
- An innovative career planning framework to guide your thinking about career success in healthcare.
- A process to help you make the connection between clarifying goals, identifying competencies, selecting resources and tracking progress.



\*Note: you must be an active member of ACHE to access the CareerEDGE tool.



## THE FELLOW GRANT PROGRAM AWAITS

**THERE'S NO TIME LIKE THE PRESENT TO PURSUE AN FACHE**

The FACHE credential brings continuous value to not only you as a healthcare leader, but also to your organization and community. The credential is recognized across all healthcare markets, wherever your career might take you.

## ABOUT THE FACHE CREDENTIAL

- It is America's highest and most well-regarded board certification in healthcare management
- It demonstrates your competency in all areas of

healthcare management

- It signifies your lifelong commitment to change and improvement

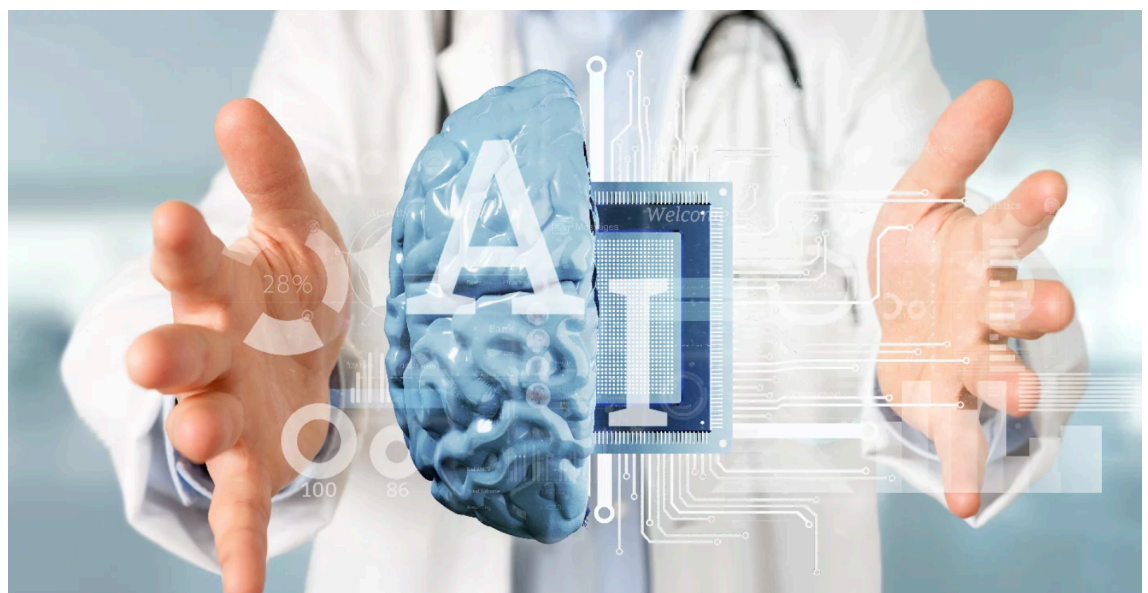
Interested in achieving your FACHE credential? **ACHE of Middle Tennessee wants to sponsor you!** ACHEMT grants are available to Chapter members by submitting your application [here](#). Contact [Grants@achemt.org](mailto:Grants@achemt.org) if you have any questions. Learn more about the FACHE [here](#).



## EDITOR'S CORNER

GARY SHAW, LFAACHE

### HARNESSING THE POWER OF AI: A REVOLUTION IN HEALTHCARE



In the rapidly evolving landscape of healthcare, one technological advancement stands out for its transformative potential: Artificial Intelligence (AI). As we delve deeper into the capabilities of AI, its impact on the healthcare industry becomes increasingly evident, promising not only unbelievable capabilities and revolutionary changes but also tangible benefits for communities worldwide.

At its core, AI is revolutionizing healthcare by leveraging vast amounts of data in super-fast time to drive informed decision-making and deliver personalized care. One of its most profound applications lies in predictive analytics, where AI algorithms analyze patient data to identify patterns and predict potential health issues before they escalate. This proactive approach enables healthcare providers to focus care early, prevent complications, and improve patient outcomes.

Furthermore, AI-powered diagnostic tools are streamlining the diagnosis process, offering accuracy and efficiency unparalleled by traditional methods. Image recognition algorithms, for instance, can analyze medical images with remarkable precision, aiding in the early detection of diseases such as cancer. By facilitating quicker and more accurate diagnoses, AI not only saves valuable time but also enhances treatment efficacy, ultimately leading to enhanced patient outcomes.

Beyond diagnostics, AI is revolutionizing treatment strategies through the delivery of personalized medicine. By analyzing genetic and molecular data, AI algorithms can tailor treatments to individual patients, maximizing effectiveness of personalized care while minimizing side effects. This shift from a one-size-fits-all approach to personalized treatment holds immense promise for improving patient health and quality of life. Moreover, AI is driving innovation in healthcare delivery, enhancing efficiency and reducing costs. Virtual health assistants powered by AI are already beginning to streamline administrative tasks, freeing up healthcare professionals to focus more on patient care.

Additionally, AI-enabled robotics are revolutionizing surgery, enabling greater precision and reducing recovery times. These advancements not only improve patient experiences but also contribute to cost savings for healthcare providers and patients alike. Perhaps most significantly, AI has the potential to

measurably improve the health of entire communities in dramatic ways. By analyzing population health data, AI can identify trends and risk factors at a community level, enabling healthcare providers to target appropriate interventions to address public health challenges. From disease prevention programs to optimized resource allocation, AI empowers healthcare organizations to proactively address the comprehensive and unique needs of their communities, ultimately leading to healthier populations.

As I see it, the benefits of AI in healthcare extend beyond improved health outcomes to encompass cost savings and enhanced efficiency. By automating routine tasks and optimizing resource allocation, AI enables healthcare providers to deliver high-quality personalized and focused care at a lower cost. This not only makes healthcare more accessible, personal, and affordable but also ensures sustainability in the face of rising healthcare demands. Win wins all around!

The potential for AI to revolutionize the healthcare industry is undeniable. From predictive analytics to personalized medicine, AI is driving innovation at every level of healthcare delivery, promising better outcomes for patients and communities alike.

By embracing & harnessing the power of AI, we will not only improve individual health but also transform healthcare systems to be more efficient, cost-effective, and responsive to the needs of the communities they serve. As we continue to explore the possibilities of AI in healthcare, the future of medicine looks brighter than ever before.

ACHE wants to thank you for your service!

To our Active Duty and Retired Military members and their families.... Please join your ACHEMT colleagues for a game



between the Nashville Sounds vs. Omaha + Fireworks on  
6/21/24 (6:35pm). Meet & Greet Outside of Venue Around  
6:00pm

ACHEMT wants to share its appreciation for our Military community and their families while growing awareness of the ACHE organization and potential partnership opportunities for active, transitioning, and veteran members and organizations. ACHEMT also thanks our sponsors that selflessly step forward to make military appreciation events and activities possible!

Together, ACHE and it's partners help connect individuals to career opportunities, materials, and events that further serve the individual, community, and healthcare industry. Thank you SPONSORS!!!

ACHEMT is offering 100 Free Tickets to Active Military, Veterans, & Family Members (1<sup>st</sup> Come 1<sup>st</sup> Serve). Additional tickets are available for purchase (\$25 apiece).

To our sponsors:

ACHEMT is actively seeking Sponsors for this event (Gold Sponsor: \$>500, Silver Sponsor: \$>250, Bronze Sponsor: \$100). All sponsors will have their company logo displayed in the promotional and appreciation posts/materials/future newsletters. Gold and silver sponsors will receive free tickets to the event (Silver 4, Gold 6). Gold sponsors will be given the opportunity to give an appreciation speech in between innings (and/or can hand-out company promotional).

Lets play BALL!!

---